



Multiple Application Platform Server

MAPS 6.8 Release Guide

Product version 6.8

Last updated 9/30/2021

Trademark, Publishing Statement, and Copyright Notice

© 1998-2021 Evisions. All rights reserved.

This software and related documentation are provided under a license agreement containing restrictions on use and disclosure and are protected by intellectual property laws. No part of this document may be reproduced, stored in or introduced into a retrieval system, or transmitted in any form or by any means (electronic, mechanical, photocopying, recording, or otherwise), or for any purpose, without the express written permission of Evisions.

The information contained herein is subject to change without notice and is not warranted to be error-free. Product features referenced herein for a period of time may not match product contents. Evisions does not warrant that the functions contained in the software will meet your requirements or that the operation of the software will be uninterrupted or error free. Evisions reserves the right to make changes and/or improvements in the software without notice at any time.

This software and documentation may provide access to or information on content, products, and services from third parties. Evisions and its affiliates are not responsible for and expressly disclaim all warranties of any kind with respect to third-party content, products, and services. Evisions and its affiliates will not be responsible for any loss, costs, or damages incurred due to your access to or use of third-party content, products, or services. Evisions does not endorse the content or developer of any products or web sites mentioned.

All information in this guide is designed for instructional purposes only. Evisions makes no guarantees regarding the accuracy or performance of any techniques used in this guide. Software configurations and environments may vary, and some techniques used in this guide may not operate efficiently under all configurations. This guide may contain examples of various technologies or products, which are the sole property and responsibility of their creators.

Trademarks are the property of the respective owners for any products mentioned herein.

Table of Contents

What's New in MAPS 6.8?	4
MAPS Updates	4
Product versions	4
Installation	4
1. Prepare test environment and ensure current backup	4
2. Check for updates	4
3. Allow update process to complete	5
4. Verify the latest version is installed	5
Idle Timeout	6
MAPS 6.8 Release Notes	7
Getting Help	8
Can't find what you're looking for?	8

What's New in MAPS 6.8?

Evisions is pleased to announce the release of MAPS version 6.8, which includes the following changes:

- Implemented a new idle timeout for application sessions.
- Added the Grant Type field and the grant type "client_credentials" to the Driver Properties tab for increased flexibility when using REST Connections.
- Security tokens are now stored in MAPS in order to resolve an issue regarding failed authentications in a clustered environment.
- REST connections using OAuth2 were experiencing an issue where the abort authentication dialog became hidden.
- Stability improvements.

We appreciate the feedback received from all of our users. Our products would not be what they are today without your continued support. If you have any comments or suggestions, please do not hesitate to [open a case with the HelpDesk](#) and let us know.

MAPS Updates

MAPS 6.8 is an update to the MAPS service and the MAPS Config. You should upgrade both components concurrently.

[Product versions](#)

The latest versions of MAPS included in this release are:

- MAPS service 6.8.0.2518 / MAPS Config 6.8.0.1394

Installation

[1. Prepare test environment and ensure current backup](#)

We highly recommend installing updates in a test environment before applying them to your production environment. You should make sure that a current backup is available in case of any unforeseen issues. To create a full backup of your MAPS environment, go to the **Server -> Backups** screen in MAPS and click **Backup Now**.

[2. Check for updates](#)

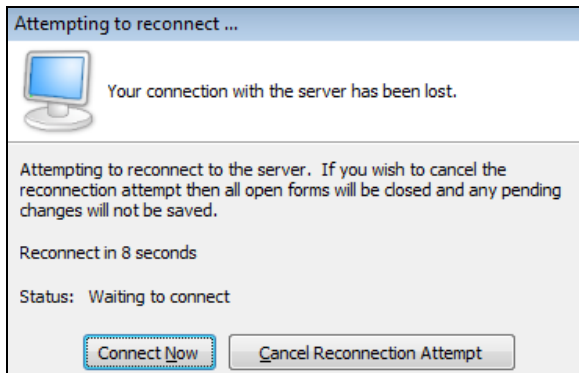
Click the **Check for Updates** button in the MAPS Configuration tool to view available updates.

If you need to apply earlier updates prior to the 6.8 update, please refer to the appropriate [release guide\(s\)](#) before proceeding.

It is possible to apply updates when users are on the system; however, to avoid the possibility of losing unsaved work we recommend applying updates during off hours.

[3. Allow update process to complete](#)

When applying updates to the MAPS service you will be temporarily disconnected from the server:



The update process may take a few minutes to complete. **Do NOT cancel the reconnection attempt or manually restart the server.** You will automatically be reconnected to the server once the update has been applied.

[4. Verify the latest version is installed](#)

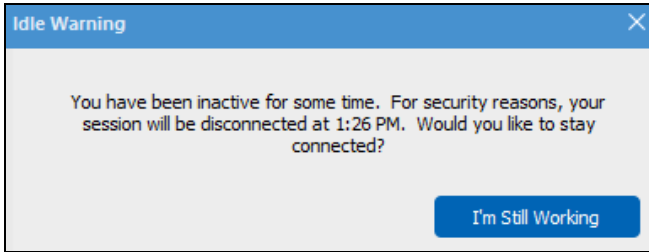
To ensure that you are on the most current version, continue clicking the **Check for Updates** button and applying the updates until no new updates are available.

Please Provide Us with Your Feedback!

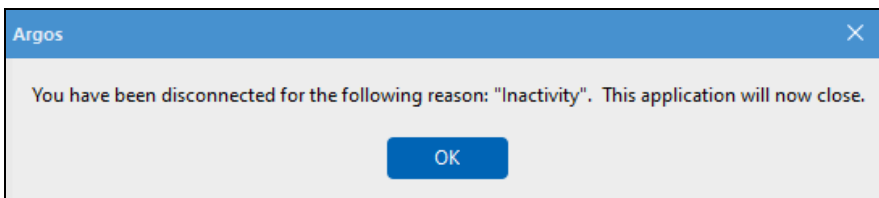
As always, we welcome any [feedback or suggestions](#) you may have. We very much appreciate your thoughts and suggestions, so please keep the great ideas coming!

Idle Timeout

For security purposes, the MAPS Administrator may choose to implement an idle timeout for all application sessions. The idle timeout controls how long MAPS should allow an application to remain idle before sending an idle warning message to the user. If the user is still present they may select **I'm Still Working** on the Idle Warning message to continue their session, otherwise the application's session will be dropped.



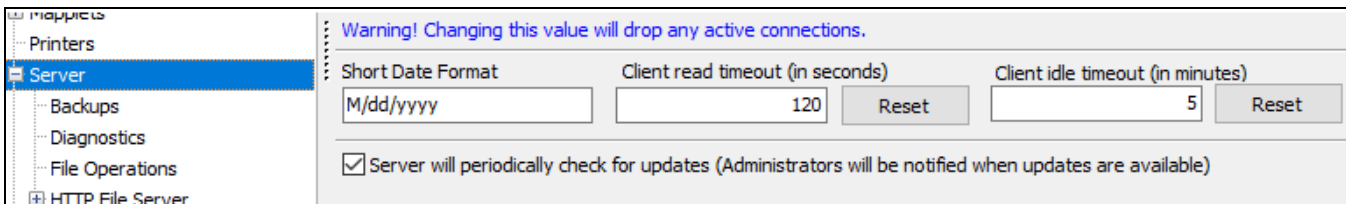
Once a session is dropped, the user will see the following message upon their return:



Idle timeout affects MAPS Config, as well as all MAPS application sessions (Argos, FormFusion, and IntelCheck).

Note: FormFusion and IntelCheck users will not receive the Idle Warning dialog and their session will be dropped if idle for too long. Drafts are also not supported in either FormFusion or IntelCheck, and as such it is strongly recommended to save your work often in case an idle timeout occurs, especially if moving away from your device for any period of time.

The controls for configuring the idle timeout can be found under the Server tab in MAPS Config, next to the controls for **Short Date Format** and **Client read timeout (in seconds)**.



The timeout value defaults to **0 minutes** which disables the idle timeout feature. The MAPS Administrator can manually set the value in minutes, with a minimum timeout value of 5 minutes, and a maximum timeout value of 720 minutes (12 hours).

MAPS 6.8 Release Notes

MAPS Service 6.8.0.2518 / MAPS Config 6.8.0.1394

MAPS

Enhancements

Area	Description	Issue number
Configuration	Added an idle timeout for application sessions.	MAPS-336
Configuration	Updated the MAPS Database Configuration utility to support MAPS 6.8.	MAPS-3188
REST Data Connections	Added the Grant Type field and grant type "client_credentials" to the Driver Properties tab in the Edit Data Connection dialog for REST connections using OAuth2.	MAPS-3093

Resolved Issues

Area	Description	Issue Number
Database	Launching an application in a clustered MAPS environment was resulting in failed authentication and an invalid security token error message.	MAPS-2440
eLauncher	Applications in clustered environments were sometimes failing to download.	MAPS-3179
REST Data Connections	Selecting the properties window while a REST connection using OAuth2 was authenticating caused the abort authentication dialog to become hidden.	MAPS-3094

Getting Help

For information on using the software, please refer to the product Help, which contains detailed information on all aspects of the product.

If you are having problems with the installation or configuration, you can search our [support site](#), which includes a knowledge base of common issues. If you are unable to find the solution, submit a HelpDesk request with a detailed explanation of the problem you are experiencing.

Please do not hesitate to contact the Evisions HelpDesk if any questions or problems arise. We are here to help you and want to ensure your success.

Can't find what you're looking for?

We would love to make our documentation better! If you have a moment to let us know what we missed or how we can make the help more useful, please email us at TechDocs@evisions.com.